

DC Generator Model 5066

Model 5066 brushless generator system was developed to satisfy the unique load profiles of the U.S. Navy Tomahawk Cruise Missile. The system comprises a generator and a power conditioning unit (PCU) integrated within a single unit.

The generator utilizes high energy Samarium Cobalt magnets complemented by a homopolar inductor section for voltage control over the required speed and load profile. The dual outputs are electrically isolated from each other, thereby preventing cross interaction between loads. The generator is pad-driven by the Williams International F107 engine. The integral PCU provides the system with rectification, filtering and voltage regulation functions.



Specifications

Dual output voltage:

27 VDC to 29 VDC
24 VDC to 40 VDC

Overload

75 A per output

Speed Range:

29,000 to 41,000 RPM

Weight:

16.0 lbs

Overspeed:

45,000 RPM

Ambient:

-54 C to 75 C

Efficiency:

85% at rated load

Altitude:

0 to 30,000 ft

Rating:

4 KW

Compliance:

MIL-STD-704
MIL-STD-810
MIL-STD-461B

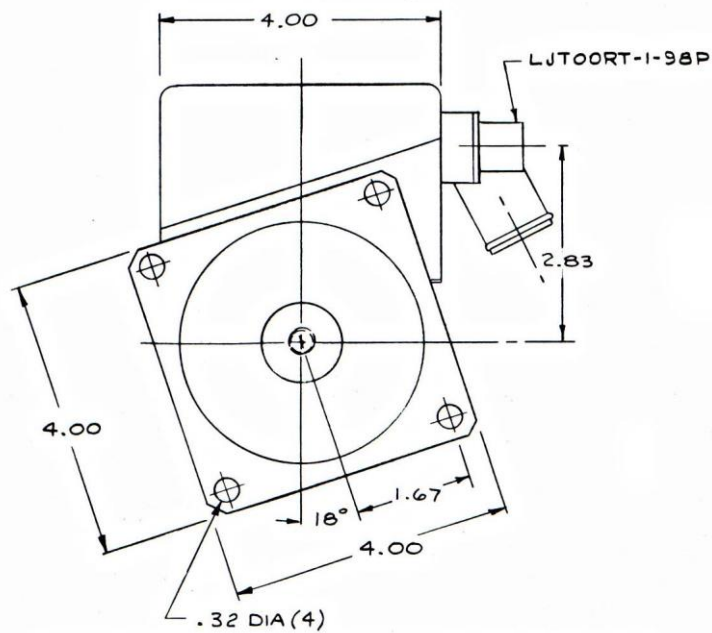
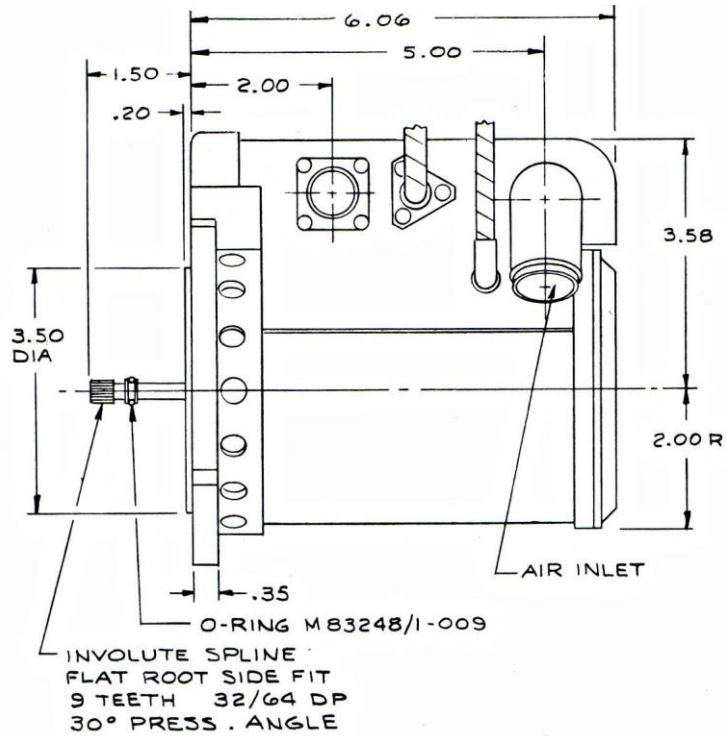
Cooling:

Blast air

OEKO

Our product competencies and services:
Permanent magnet alternators | Permanent magnet generators | AC/DC brushless starter generators | Aircraft light dimmers
Power supplies | Magnetics | Sensors | Meters

© OEKO | 2015



GENERATOR / POWER CONDITIONING UNIT-SET

OECO

4607 SE International Way
Milwaukie OR 97222
USA

Tel: +1 (503) 659 5999

www.oeco.com
www.meggitt.com