



# Permanent magnet AC alternator Model 5466

Model 5466 provides electrical power for a FADEC system used on a Pratt & Whitney Canada commercial aircraft engine.

The rotor is a sleeved segmented unit employing high energy magnets. The stator comprises epoxy bonded laminations and a continuous three phase winding. A stainless steel housing locates the stator and interfaces with the mounting pad. The alternator is gear driven from an engine accessory gear box.



## Specifications

### Overspeed:

29,580 RPM

### Weight:

1.0 lbs

### Ambient:

-54 C to 177 C

### Altitude:

0 to 50,000 ft

### Cooling:

Convection / conduction

### Compliance:

MIL-STD-461B

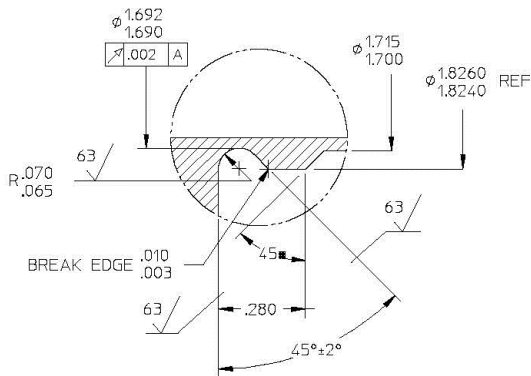
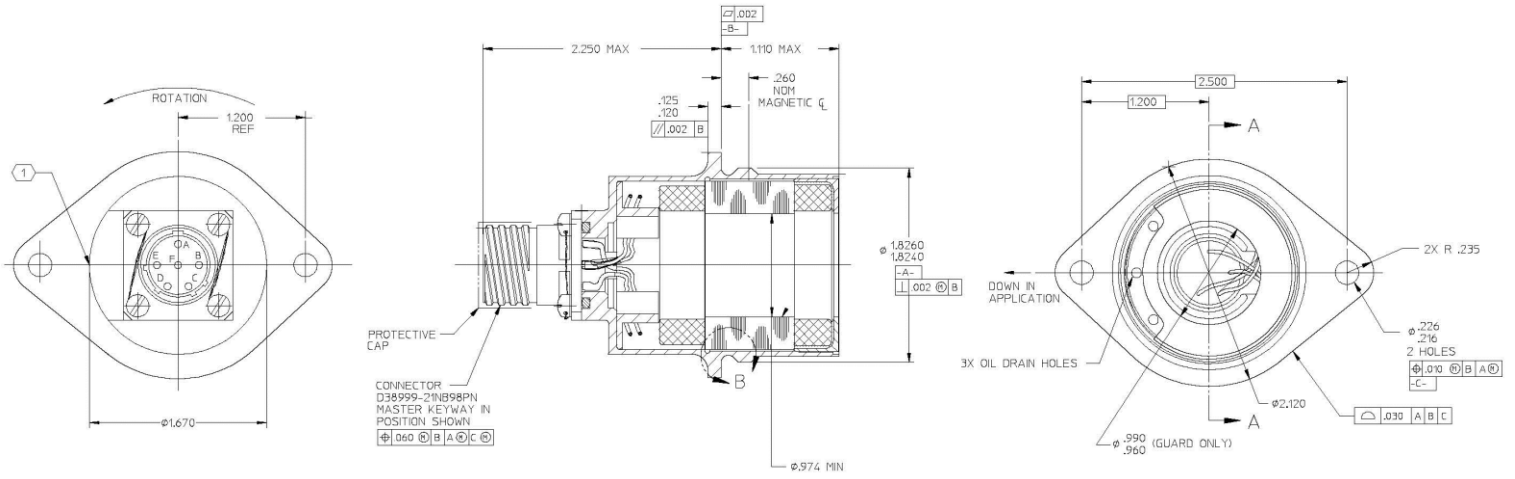
### Electrical:

3 phase WYE windings

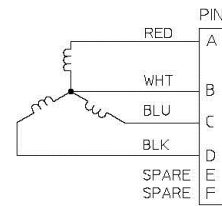
## OEKO

Our product competencies and services:  
Permanent magnet alternators | Permanent magnet generators | AC/DC brushless starter generators | Aircraft light dimmers  
Power supplies | Magnetics | Sensors | Meters

© OEKO | 2015



DETAIL B  
 SCALE 4/1



CONNECTION DIAGRAM